



21st CCLC Grant Writing Tips Grant Purpose

Alaska Department of Education &
Early Development (EED)

2012

Before we get started...

- This is being recorded
- Phone on mute/quiet spot/no typing
- If possible, ask questions through Blackboard
- Save “sensitive” questions for emails

21st Century Community Learning Center Grants



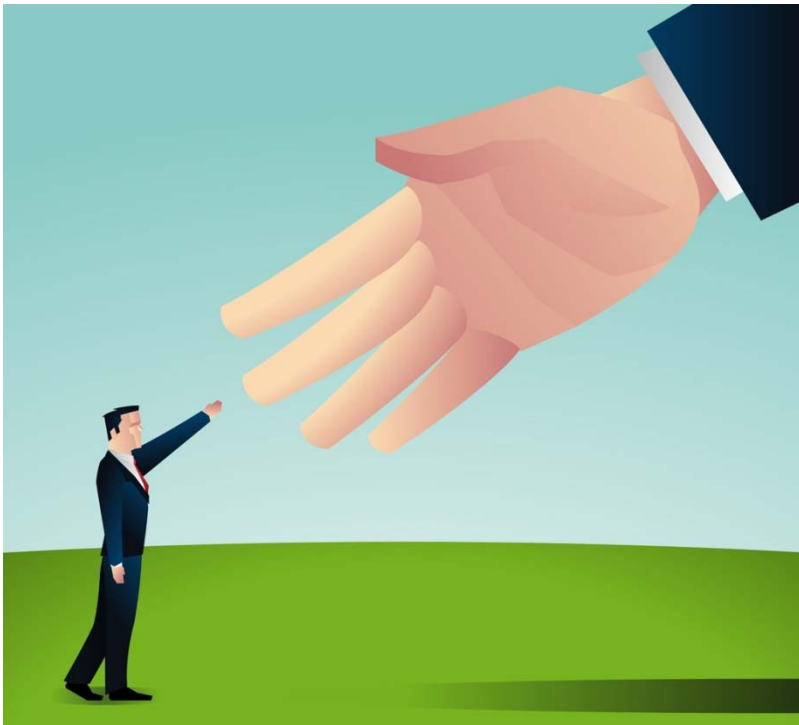
- Funded through the U.S. Department of Education – ESEA
 - Law, Non-regulatory guidance
- Alaska receives approximately \$5.5 million/year

21st Century Community Learning Center Grants

- Provides opportunities outside of the traditional school day



21st Century Community Learning Center Grants



- Any public/private organization can apply
 - School Districts
 - Faith-Based Orgs
 - Community-Based Orgs
 - Coalitions
 - Combination
- But....

21st Century Community Learning Center Grants

- 5 year grants
- Between \$50,000-\$500,000/year
- This competition will fund 2-4 new grants



Target Audience

- Primarily targeted to students who attend high poverty, low-performing schools
 - Title I
 - Schools with 40% or greater poverty levels and;
 - Title I Schools in Improvement



Academic Focus, but...



- Focus on improving reading, writing and mathematics
- Measured through improvements in State and Local Assessments

Academic Focus, but...

- Programming in other areas such as physical activity, health, arts, music, culture etc.



Capacity and Program Staffing



- Organizational support for program
- Well trained and supported qualified staff
- Staffing appropriate for the program and realistic for community

Community Partnerships

- Staffing
- Advocacy
- Marketing
- Programmatic funding and/or support
- Sustainability



Best Practices and Resources

- Doing What Works – research-based education practices online
 - http://www.dww.ed.gov/Increased-Learning-Time/topic/index.cfm?T_ID=29
- U.S. Department of Education
 - <http://www2.ed.gov/programs/21stcclc/index.html>
- Harvard Family Research Project
 - www.hfrp.org
- Afterschool Alliance
 - <http://www.afterschoolalliance.org/startingaProgram.cfm>

Next Steps?

- Research
- Community meeting(s)
- Local grant preparation and planning
- Participation in technical assistance opportunities – Next one February 3!
- Note DUE dates
- Ask questions

Need more information?

Contact:

- Terri F. Campbell
- Alaska Department of Education & Early Development
- P.O. Box 110500
- 801 West 10th Street, Suite 200
- Juneau, Alaska 99811-0500
- (907) 465-8719 Phone
- (907) 465-2713 Fax
- Terri.Campbell@alaska.gov
- www.eed.state.ak.us/21cclc/