



# NCLB WINTER CONFERENCE

## **The Unity Project:**

Data Mining for Student Success

Alaska Dept. of Education & Early Development

Kurt Hartman – Project Director

Robert Bowles – Team Leader

Sidney Fadaoff – Program Coordinator

# EED Data Management Webpage

- [Employee Search](#) [FAQs](#) [Districts & Public Schools](#) [Contact Us](#)

- [State of Alaska](#) > [Department of Education & Early Development](#) > Data Management

- [Unity Project](#)

- [Unity Project Overview](#) - PDF

- [Unity Project Brochure](#) - PDF

- [Your EED Unity Team](#) - JPG

- [Unity Goal](#) - PPT

- [Data Mining for Student Success Presentation](#) - PPT

- Stakeholder's Login:

- Username

- Password

- In November 2005, the department received \$3.5 million grant for the creation of a Statewide Longitudinal Data System (SLDS) from the U.S. Department of Education. This grant will fund Phases II through IV of the Unity Project.

- For more information on the SLDS grant, see the files below. You will need to have [Adobe Acrobat Reader](#) on your computer to view the files.

- [U.S. Department of Education Grant Solicitation](#) (original)

- [Department's SLDS Proposal Abstract](#) (two-page)

- [Department's SLDS Proposal](#) (full)

- Sidney Fadaoff, Program Coordinator

- 801 West 10th Street, Suite 200, P.O. Box 110500, Juneau, AK 99811-0500

- Telephone: (907) 465-8728 Fax: (907) 465-8676

- [Schools Interoperability Framework](#)

- [ASTE 2007 Preconference Session Scholarships Offered](#)

- [SIF – Schools Interoperability Framework](#) - PPT

- [Schools Interoperability Framework Association \(SIFA\)](#)

# EED Data Management Website (Continued)

- In November 2005, the department received \$3.5 million grant for the creation of a Statewide Longitudinal Data System (SLDS) from the U.S. Department of Education. This grant will fund Phases II through IV of the Unity Project.
- For more information on the SLDS grant, see the files below. You will need to have [Adobe Acrobat Reader](#) on your computer to view the files.
- [U.S. Department of Education Grant Solicitation](#) (original)
- [Department's SLDS Proposal Abstract](#) (two-page)
- [Department's SLDS Proposal](#) (full)
- Sidney Fadaoff, Program Coordinator  
801 West 10th Street, Suite 200, P.O. Box 110500, Juneau, AK 99811-0500  
Telephone: (907) 465-8728 Fax: (907) 465-8676
  
- Schools Interoperability Framework
- [ASTE 2007 Preconference Session Scholarships Offered](#)
- [SIF – Schools Interoperability Framework](#) - PPT
- [Schools Interoperability Framework Association \(SIFA\)](#)
- District Student Information Systems - Results from April 2007 District SIS Survey:
  - [By District](#) - PDF
  - [By Student Information Systems](#) - PDF
- Resources
- [Comprehensive OASIS Data Dictionary](#) - (Online Data Element Database)
- [Report Card Handbook](#) - (Pupil Accounting Handbook)
- [EDEN Portal Link](#) - Takes you to the login for EDEN and the Consolidated State Performance Report
- [Education Data Exchange Network \(EDEN\)](#) - The main information page on EDEN



# LIST OF ALASKA PORTAL REPORTS

- [Standards based Assessment – Percent Proficient](#)
- [Standards based Assessment – Scale Score](#)
- [Standards based Assessment – Scale Score improvement](#)
- [High School Graduation Qualifying Exam](#)
- [Enrollment](#)
- [Special Education Child Count](#)
- [Participation Rate Standards based Assessment](#)
- [Graduation Rate](#)
- [Dropout Rate](#)
- [Disciplinary Actions](#)
- [Students Disciplined](#)
- [ELL Proficiency – Percent by Proficiency Level](#)
- [ELL Proficiency – Scale Score](#)
- [ELL Proficiency – Making Progress](#)
- [Staff Turn-over](#)
- [Teacher Experience](#)
- [Courses Taught by Highly Qualified Teachers](#)
- [Incidents of Crime/Violence](#)
- [Truancy](#)
- [Attendance](#)

# LIST OF STATIC REPORTS

- AYP
- District Report Card
- State Report Card

# Report Purpose

- **Decision:** A judgment is required about the appropriate action to take
- **Compliance:** A report is required to meet a mandate
- **Profile:** A descriptive report is provided (school report card, web profile).
- **Analysis or *Ad Hoc* Query:** An unanticipated request or a research/evaluation question is answered.
- **Audit:** A statistical report or list is needed to monitor the functioning of a system or process.

**SAMPLE REPORTS  
(NOT FROM ALASKA AND  
NOT REAL DATA)**

Welcome **Anne Administrator**  
 Logged in as Maine LEA Administrator  
 Last Logged In : Aug 29 2007 5:35PM  
 Current Login : Aug 31 2007 1:31PM

### Communications Center

- ▶ E-Mail New
- ▶ Calendar New
- ▶ Phone Book
- ▶ VHD New
- ▶ SRM Notifications New



### D3M Search >>

- By Report Name
- By Criterion
- By Data Element
- By Query Name
- By Creator

### Download >>

- Current Report (Y/N)
- Public Use (Y/N)

### Reports

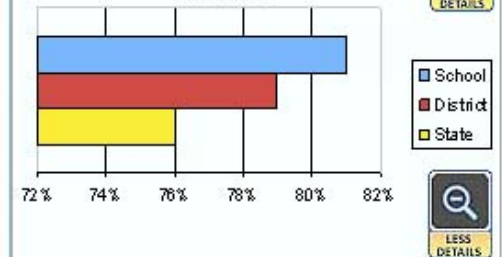
Click on each indicator for details  
 District : Riverview  
 School : Adams High School

Student Information	School	District	State
Student Enrollment	2,450	4,415	240,350
Students at Risk	35%	34%	26%
Administrative Indicators	School	District	State
Per Pupil Expenditures	\$6,750	\$6,825	\$5,934
Average Class Size	22.4	24.1	23.1
Average Teacher Experience	13.2 yrs	11.9 yrs	9.7 yrs
Teacher Attendance	84%	88%	91%
Instructional Indicators	School	District	State
Curriculum Alignment	83%	85%	86%
School Climate	85	83	81
Campus Leadership	13.2 yrs	11.9 yrs	9.7 yrs
Student Results	School	District	State
Proficient in State Assessment	81%	79%	76%
Growth Index	73	71	66
Student Attendance	87%	86%	84%
Discipline (No Incidents)	91%	85%	79%

### My Links

- Add Link
- Manage Links

### Proficiency in State Assessment All Tests



# Compliance and Legacy Reports



## Fall 2005 NECAP Tests District Summary 2005-2006 Students

District: North Kingstown  
State: Rhode Island  
Code: 23

Reading	Enrolled	NT Approved	NT Other	Tested	Achievement Level								Mean Scaled Score
	N	N	N	N	Level 4		Level 3		Level 2		Level 1		
					N	%	N	%	N	%	N	%	
<b>North Kingstown</b>	<b>2,159</b>	<b>9</b>	<b>6</b>	<b>2,144</b>	<b>431</b>	<b>20</b>	<b>1,207</b>	<b>56</b>	<b>369</b>	<b>17</b>	<b>137</b>	<b>6</b>	
Beginning of Grade 3	334	1	1	332	84	25	185	56	36	11	27	8	349
Beginning of Grade 4	342	4	1	337	75	22	190	56	44	13	28	8	448
Beginning of Grade 5	364	0	1	363	84	23	187	52	72	20	20	6	548
Beginning of Grade 6	365	3	0	362	59	16	200	55	79	22	24	7	647
Beginning of Grade 7	402	1	0	401	70	17	248	62	64	16	19	5	749
Beginning of Grade 8	352	0	3	349	59	17	197	56	74	21	19	5	848

# Text Lists with Conditional Formatting

Copy of 5-25 TBA Data Discovery - Spotfire DXP

File Edit View Insert Tools Help

Cover Page Page Page (2) Page (3)

Cross Table

(Column Names) + -

	Max(05 Reading)	Max(05 Math)	Max(05 Writing)	Max(06 Reading)	Max(06 Math)	Max(06 Writing)
	44.00	48.00	41.00	50.00	49.00	47.00
	30.00	25.00	35.00	36.00	34.00	23.00
	34.00	40.00	42.00	49.00	46.00	36.00
	43.00	39.00	40.00	42.00	37.00	41.00
	36.00	31.00	35.00	43.00	20.00	35.00
	33.00	35.00	36.00	42.00	40.00	35.00
	26.00	31.00	31.00	30.00	39.00	31.00
	(Empty)	(Empty)	(Empty)	30.00	48.00	39.00
	44.00	31.00	37.00	42.00	35.00	35.00
	36.00	36.00	44.00	43.00	42.00	36.00
	34.00	34.00	39.00	37.00	32.00	32.00
	30.00	42.00	38.00	31.00	45.00	31.00
	33.00	29.00	29.00	36.00	22.00	32.00
	26.00	35.00	36.00	37.00	35.00	31.00
	37.00	31.00	33.00	34.00	32.00	28.00
	30.00	44.00	34.00	30.00	41.00	38.00
	26.00	20.00	32.00	26.00	25.00	23.00
	31.00	33.00	35.00	36.00	36.00	42.00
	33.00	50.00	39.00	42.00	61.00	42.00
	47.00	44.00	51.00	42.00	52.00	49.00
	26.00	33.00	36.00	24.00	36.00	23.00
	20.00	46.00	33.00	37.00	46.00	28.00
	24.00	35.00	38.00	36.00	40.00	36.00
	31.00	46.00	30.00	28.00	47.00	27.00
	41.00	41.00	39.00	37.00	52.00	41.00
	35.00	44.00	32.00	40.00	43.00	28.00
	40.00	39.00	41.00	40.00	32.00	28.00
	35.00	36.00	36.00	31.00	40.00	26.00
	28.00	46.00	46.00	35.00	48.00	26.00
	28.00	35.00	32.00	36.00	48.00	26.00
	33.00	34.00	42.00	40.00	41.00	45.00

Multiple columns (6) + -

Offline

72 of 72 rows | 1 marked | 10 columns | PSAT06

FILTER PANEL

Type to search filters

06 Reading  
21.00 74.00  
[Slider]  
 Include empty values

06 Math  
20.00 61.00  
[Slider]  
 Include empty values

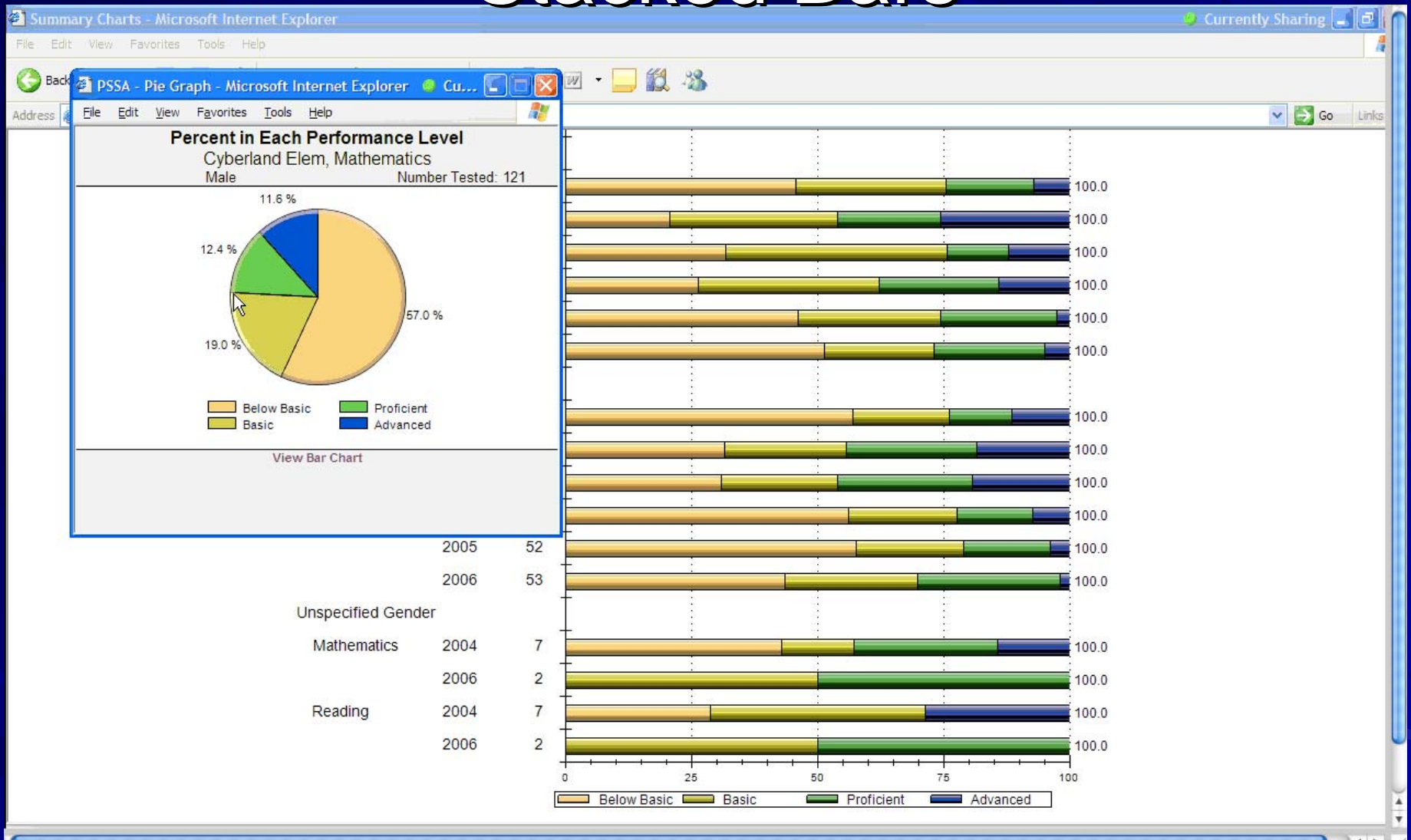
06 Writing  
20.00 58.00  
[Slider]  
 Include empty values

F9  
[All]

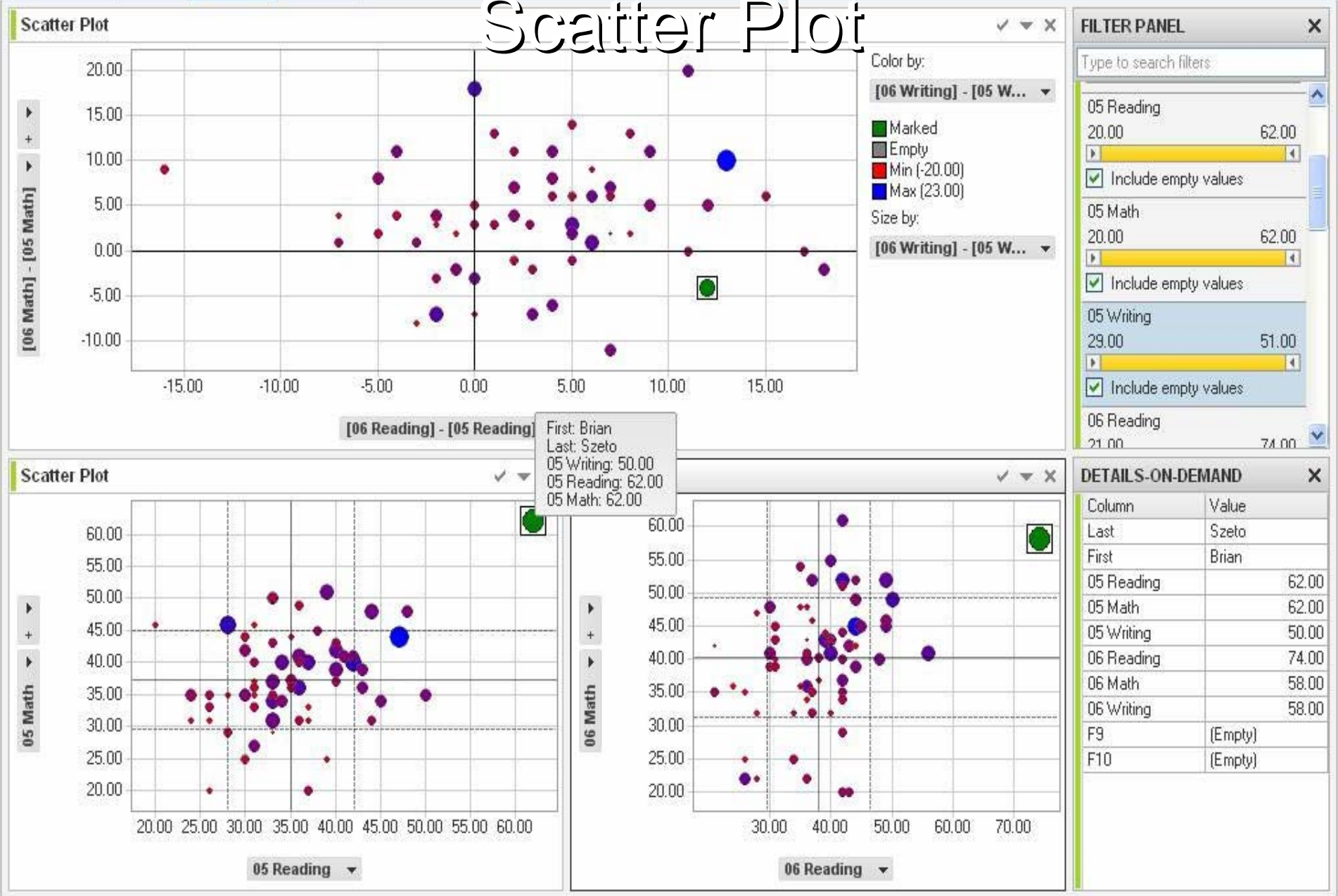
DETAILS-ON-DEMAND

Column	Value
Last	Szeto
First	Brian
05 Reading	62.00
05 Math	62.00
05 Writing	50.00
06 Reading	74.00
06 Math	58.00
06 Writing	58.00
F9	(Empty)
F10	(Empty)

# Stacked Bars



# Scatter Plot



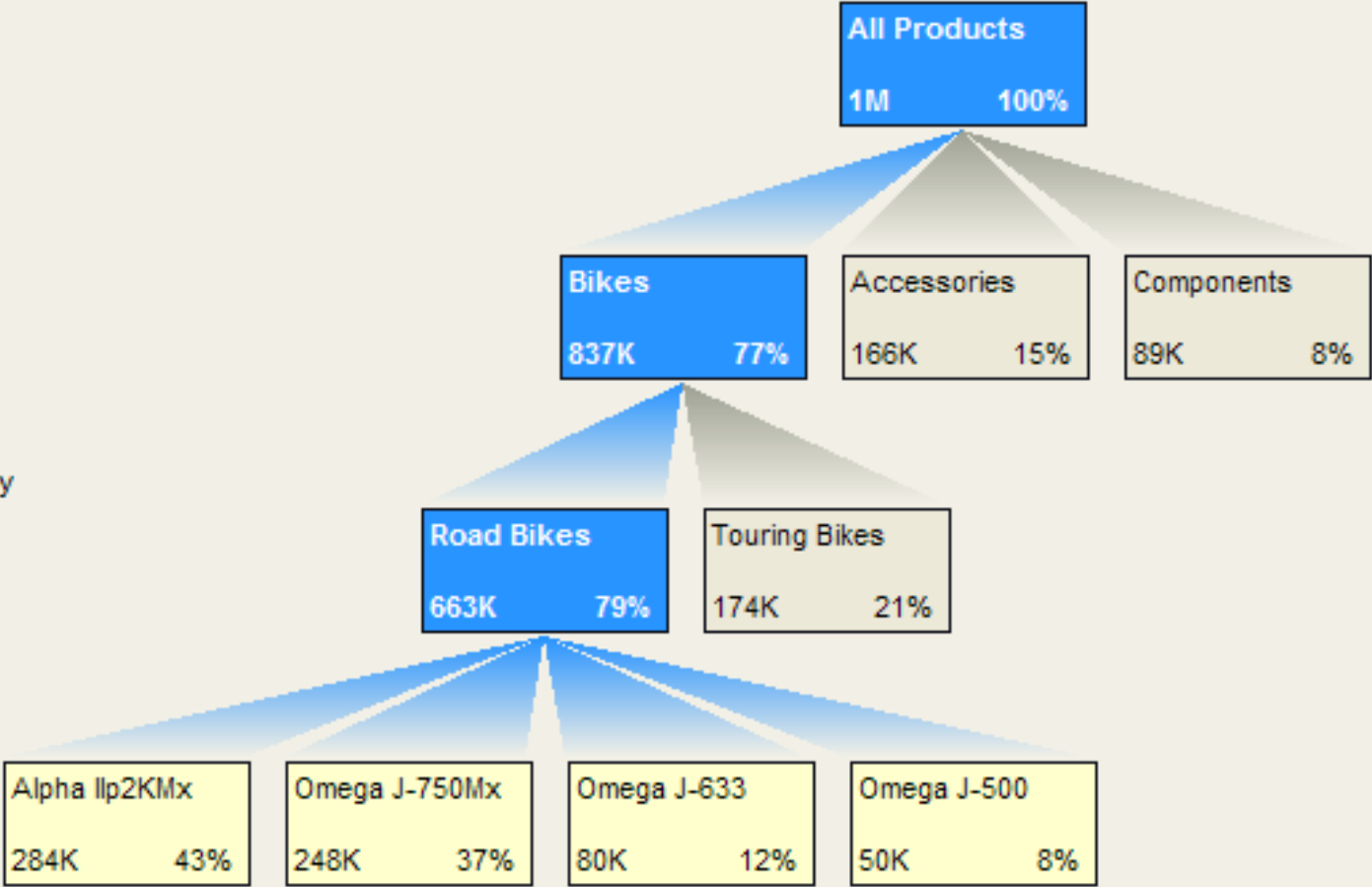
# Decomposition Tree

(All)

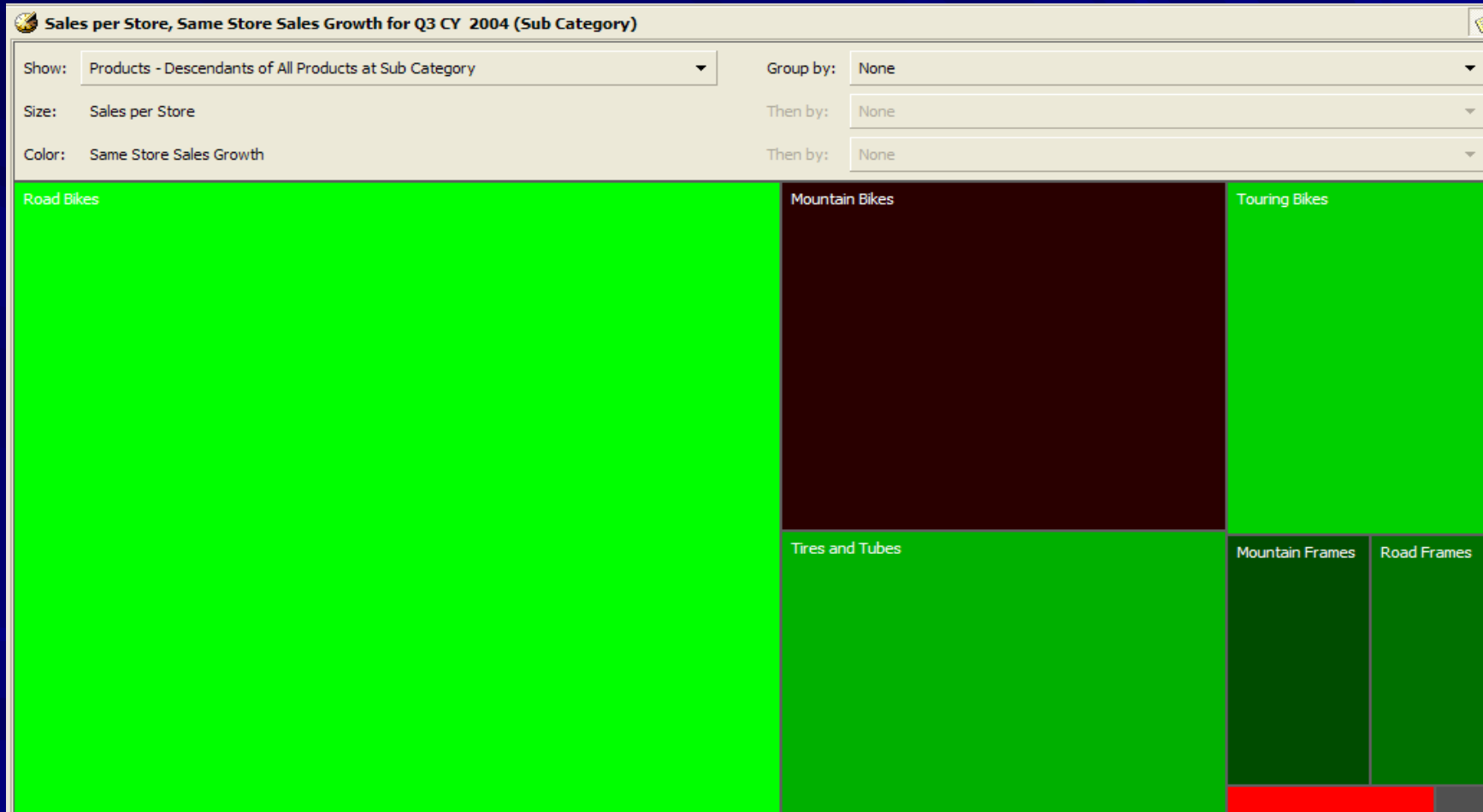
Category

Sub Category

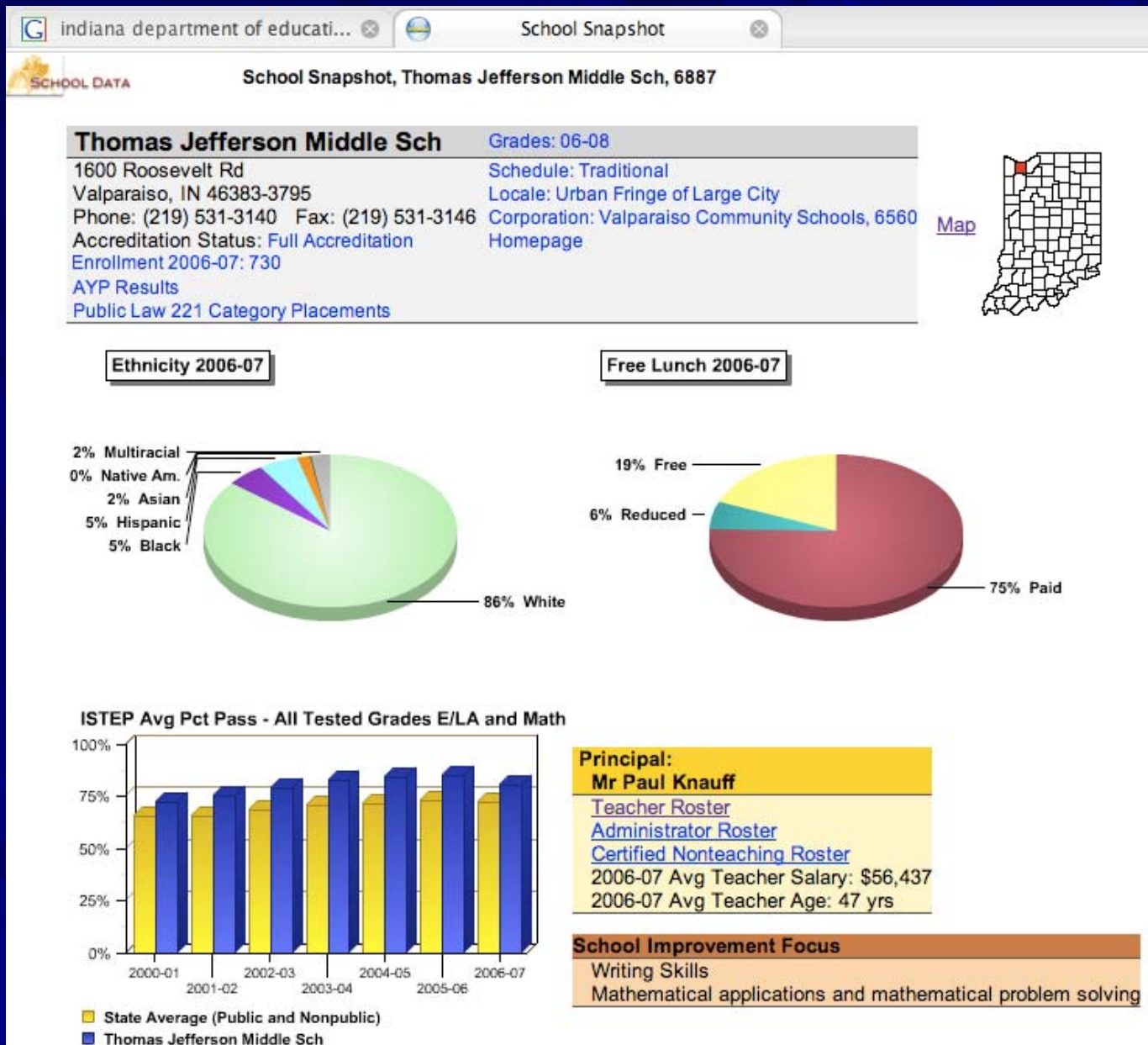
Name



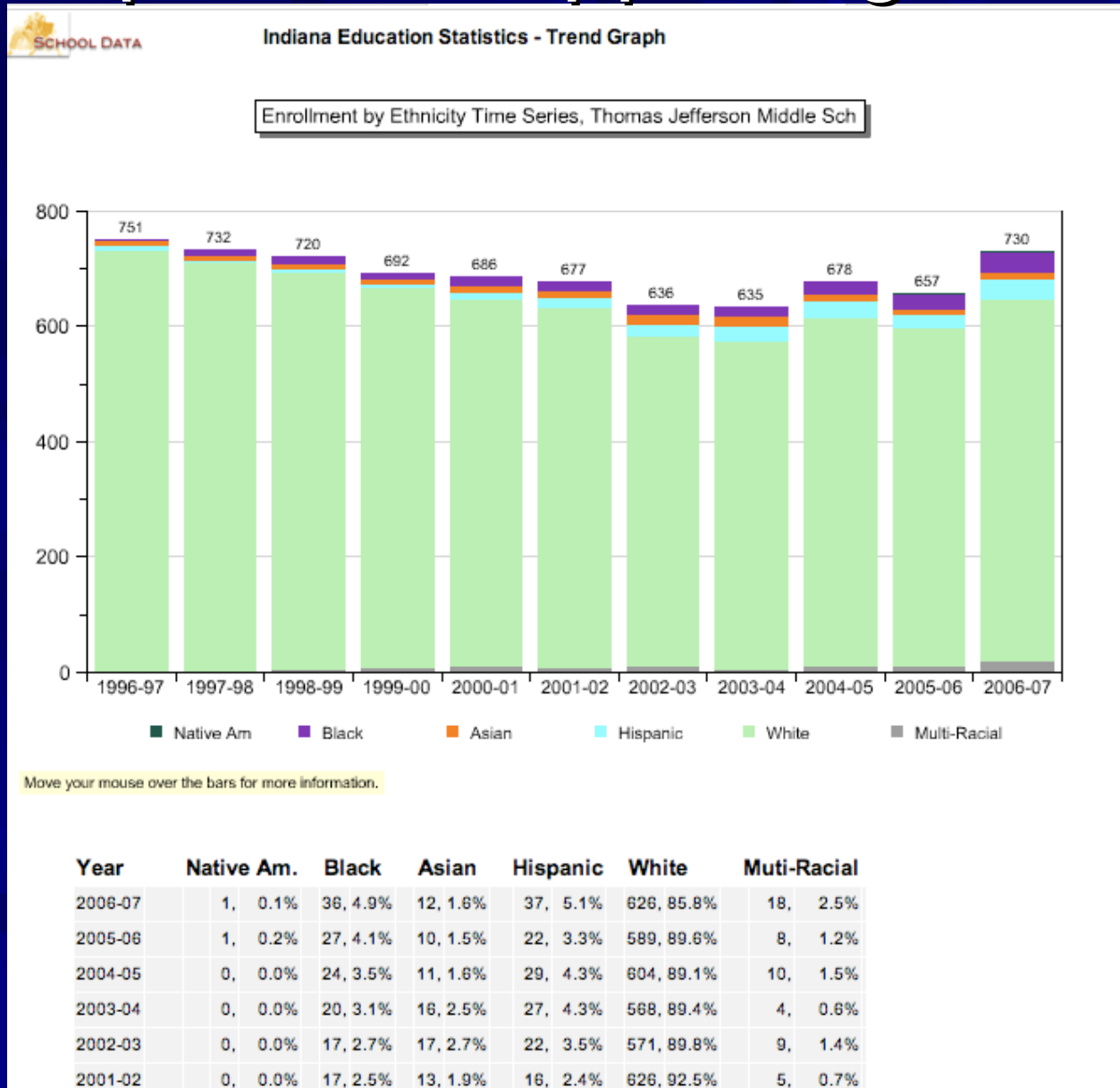
# Performance Map



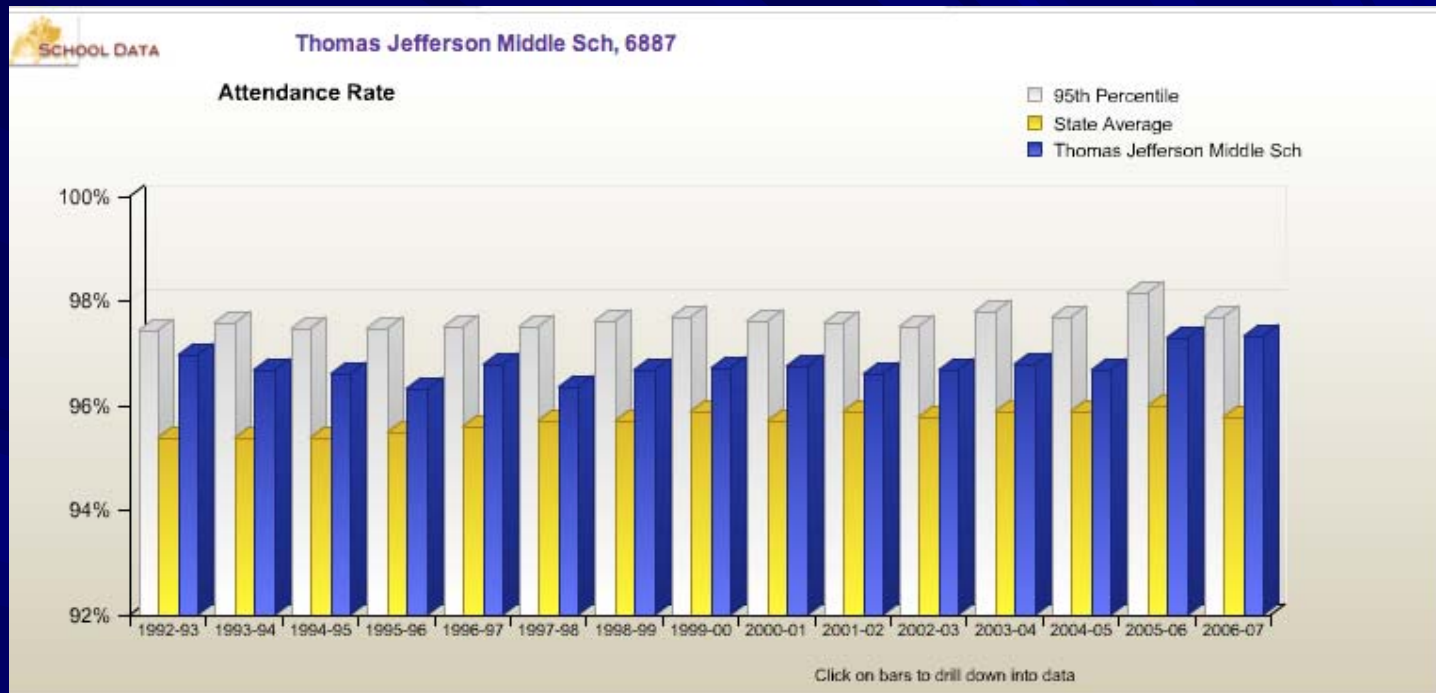
# Key Indicator Graphs



# Graph with Supporting Table



# Comparison to State & Top Performers



Line Graph  Bar Graph

Year	95th Percentile	State Average (Public and Nonpublic)	Thomas Jefferson Middle Sch 6887
2006-07	Preliminary Data 97.7%	Preliminary Data 95.8%	Preliminary Data 97.3%
2005-06	98.2%	96.0%	97.3%
2004-05	97.7%	95.9%	96.7%
2003-04	97.8%	95.9%	96.8%
2002-03	97.5%	95.8%	96.7%
2001-02	97.6%	95.9%	96.6%
2000-01	97.6%	95.7%	96.7%
1999-00	97.7%	95.9%	96.7%
1998-99	97.6%	95.7%	96.7%
1997-98	97.5%	95.7%	96.4%
1996-97	97.5%	95.6%	96.8%

# ALASKA SCHOOL/DISTRICT REPORTS

- Will have all metadata printed on bottom of reports
- Drill down available to a district's student level for that district only
- Aggregate data available to districts for comparison purposes
- Federated Security will allow Superintendents to determine and control access to its district data.

# WHAT'S ON THE HORIZON

- SIF implementation for districts to vertically report data collections to the State level
- Districts have ability to implement SIF horizontally to connect school and district disparate systems.
- State pays for district zone integration server and agent for Student Information System
- More information on SIF will be forthcoming
- Roll out over 12 month period with pilot districts.  
Complete statewide integration goal December 2009.
- Training, training, training

# TRAINING

- WebEX
- Train the trainer
- Online tutorials
- Help desk for technical assistance
- District Education Technician training

# QUESTIONS - CONTACT

Sidney Fadaoff, Program Coordinator  
Alaska Department of Education & Early  
Development  
PO Box 110500  
Juneau, AK 99801  
(907) 465-8728